

Die Verletzlichkeit der Natur











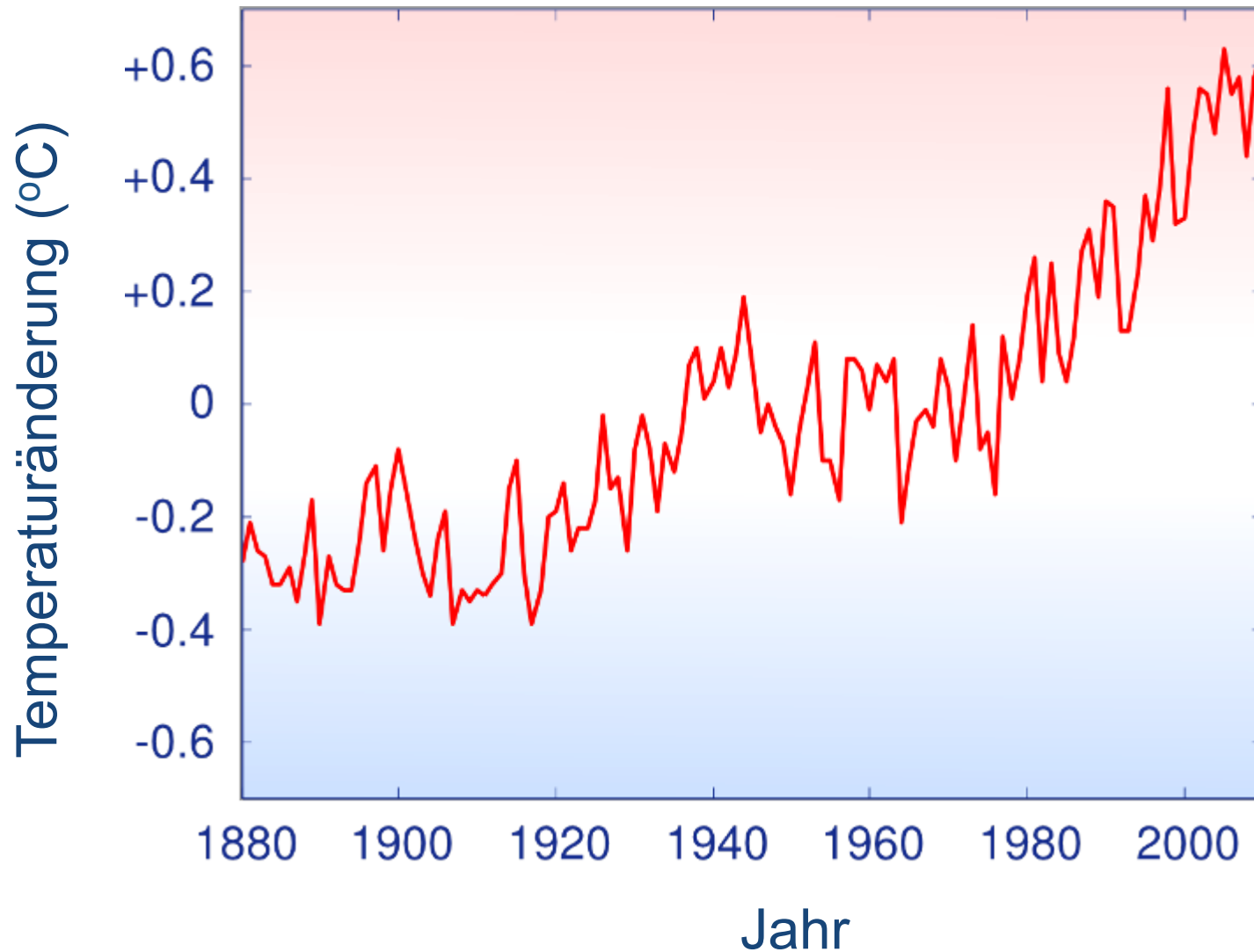


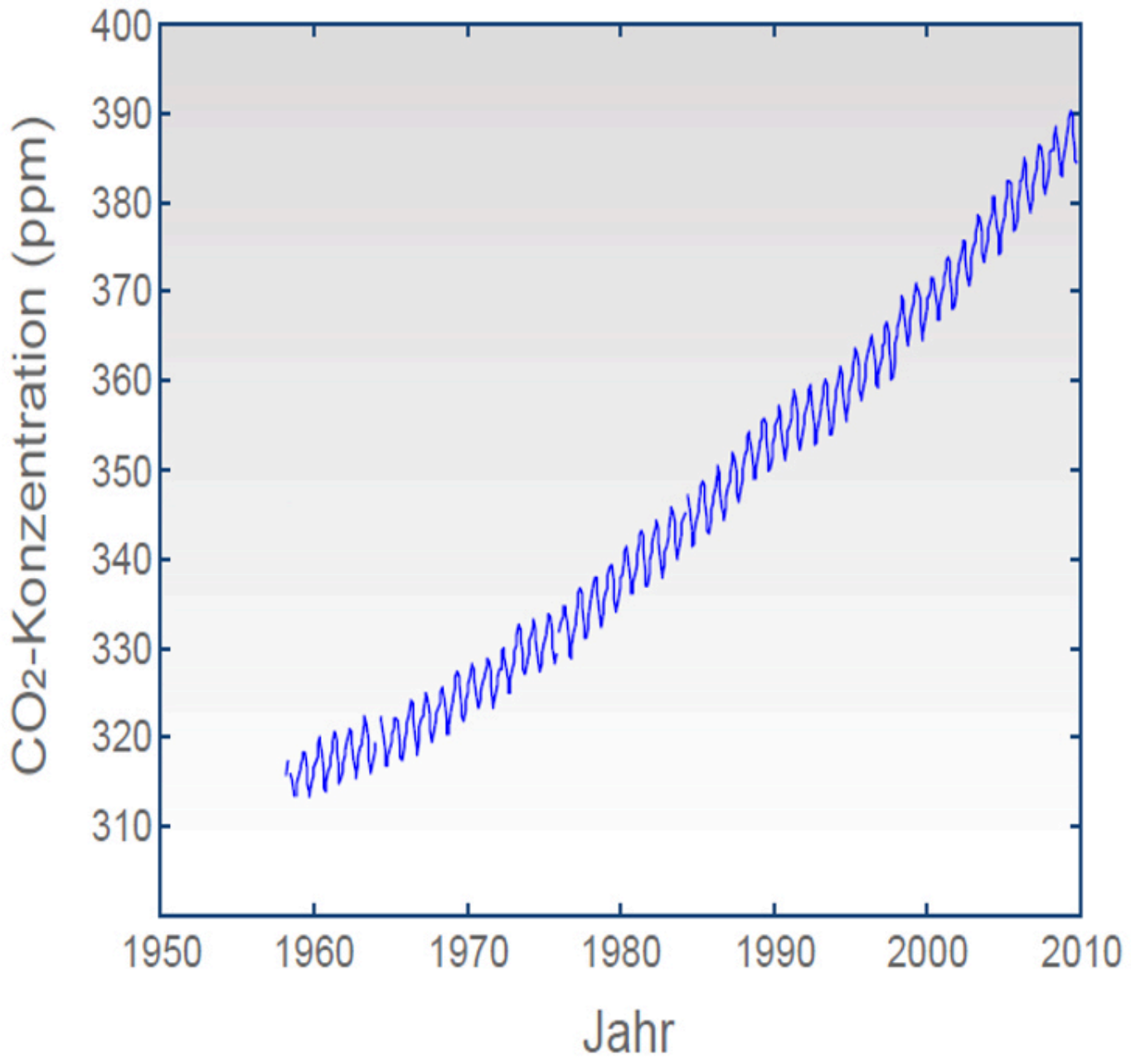


IPCC-Bewertungsskala:

Praktisch sicher	> 99 %
Sehr wahrscheinlich	90–99 %
Wahrscheinlich	66–90 %
Eher wahrscheinlich	33–66 %
Unwahrscheinlich	10–33 %
Sehr unwahrscheinlich	1–10 %
Extrem unwahrscheinlich	< 1 %

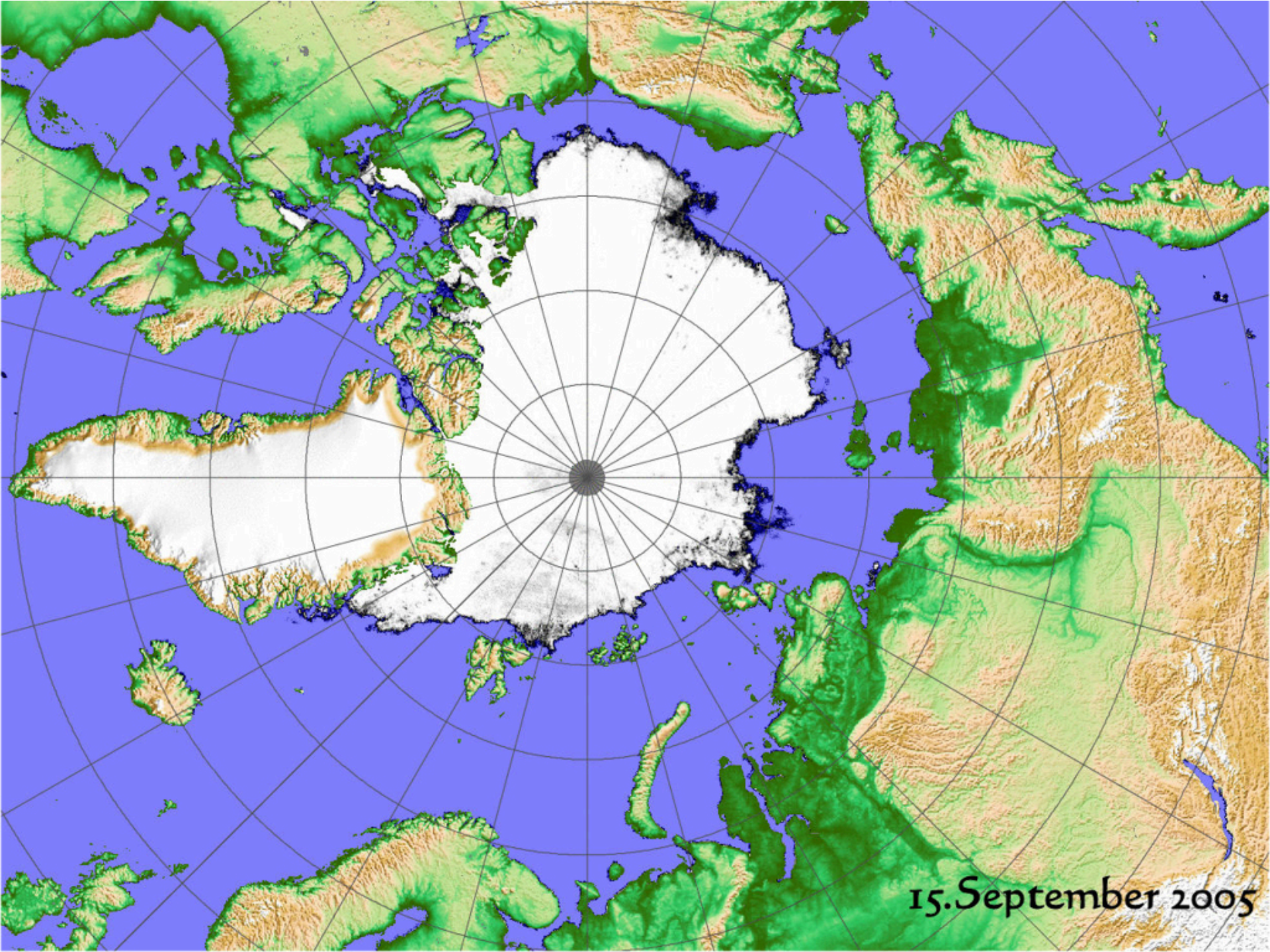
Globale Temperaturänderung seit 1880



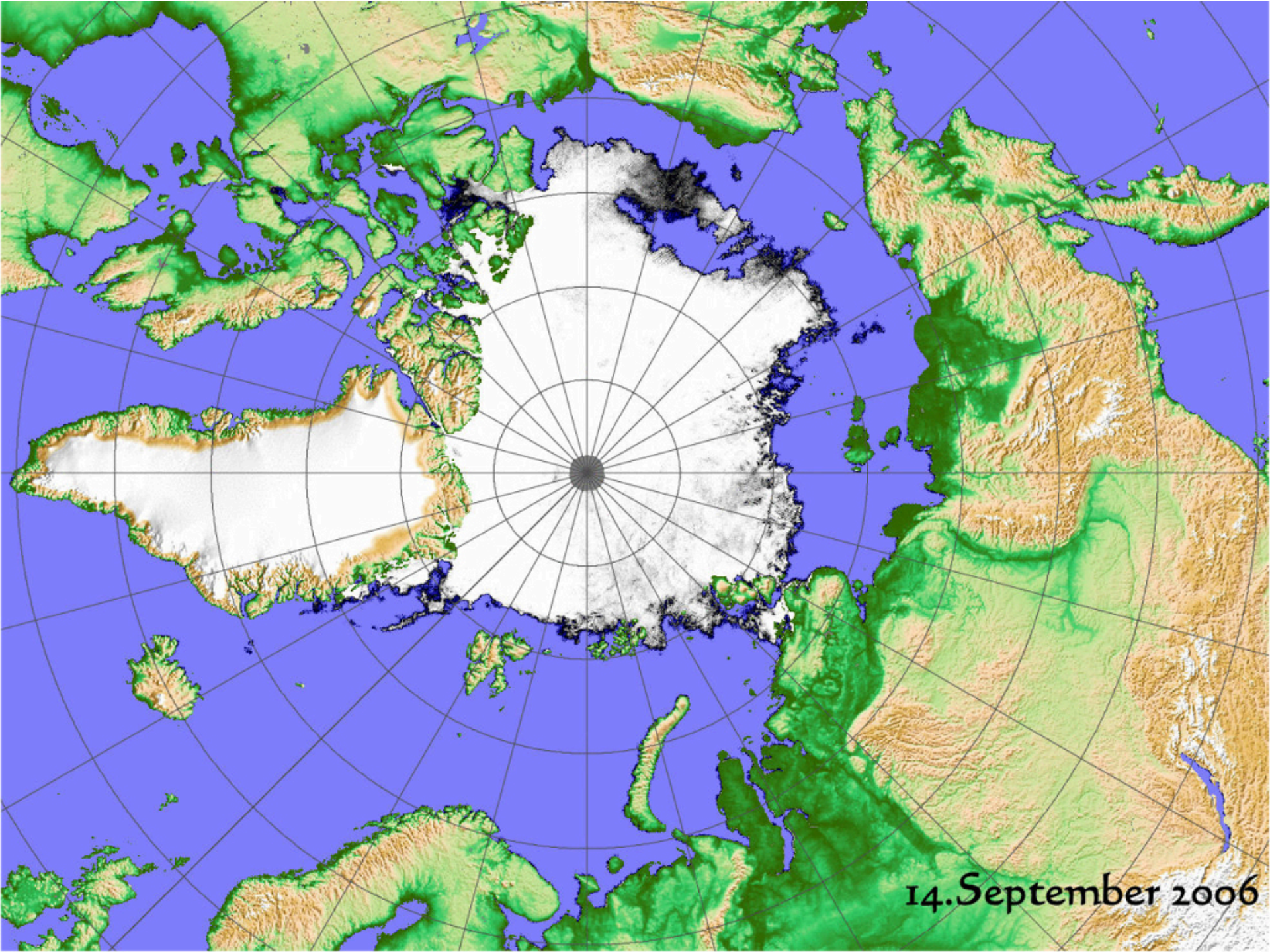




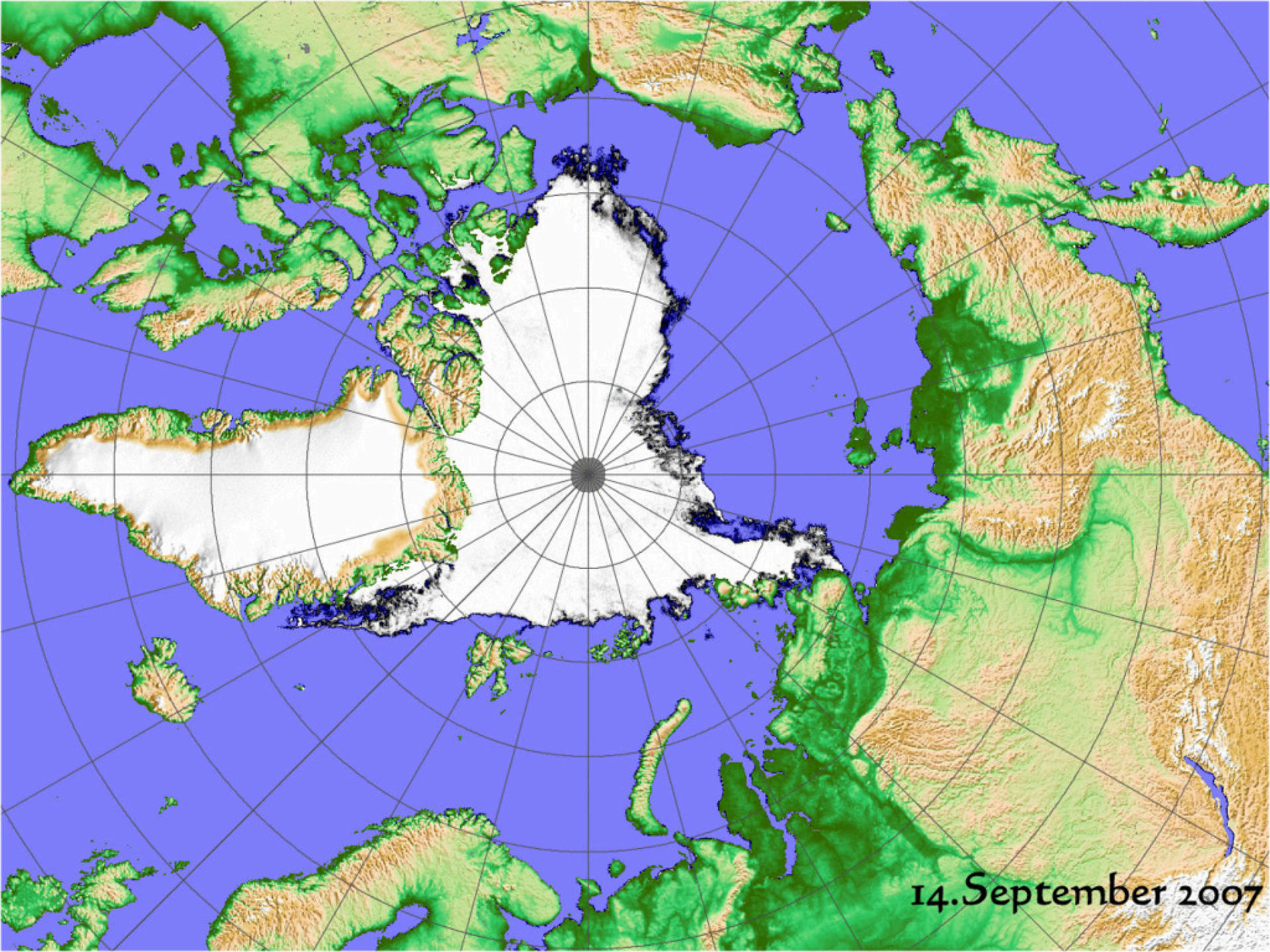
14. September 2004



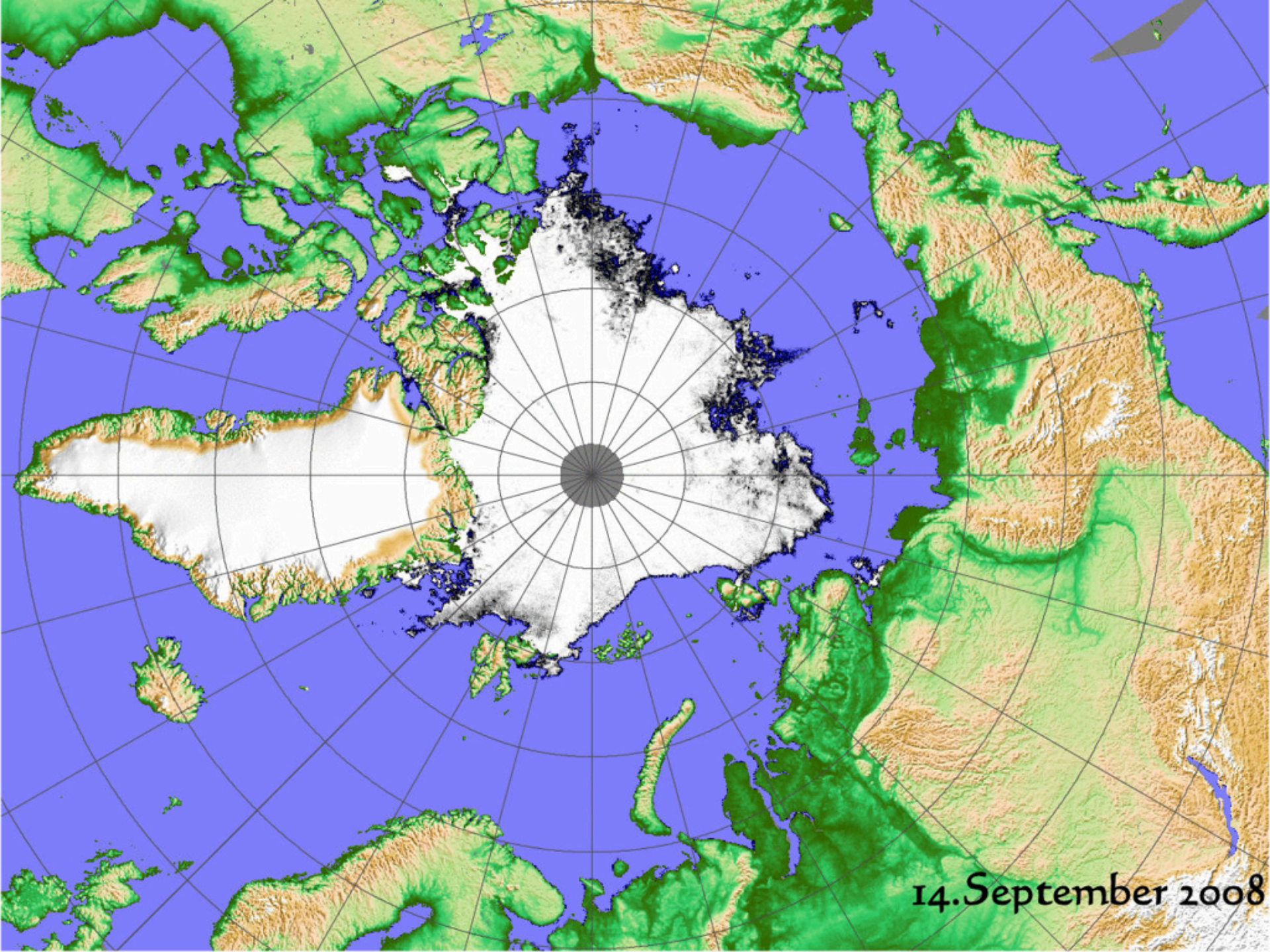
15. September 2005



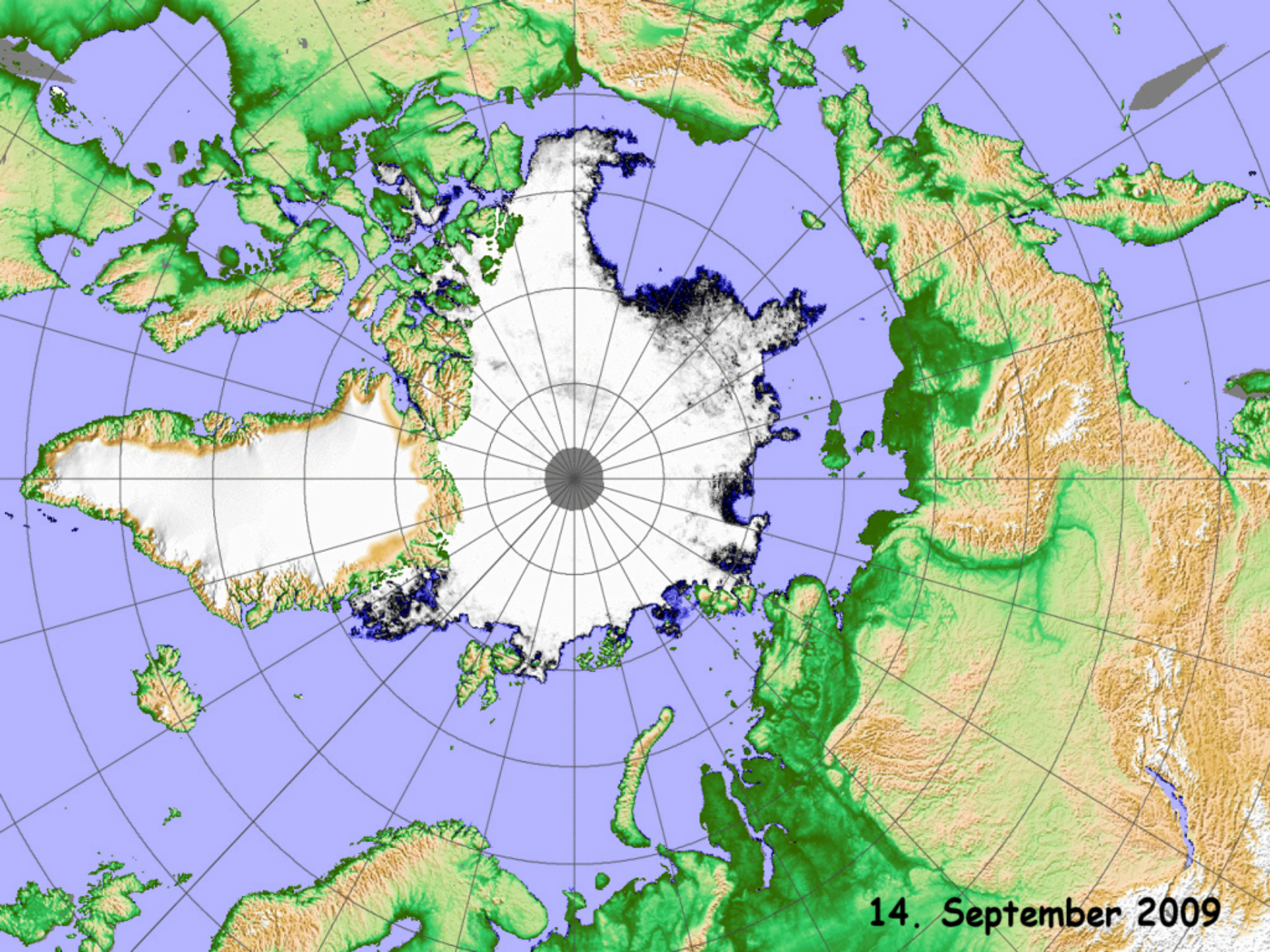
14. September 2006



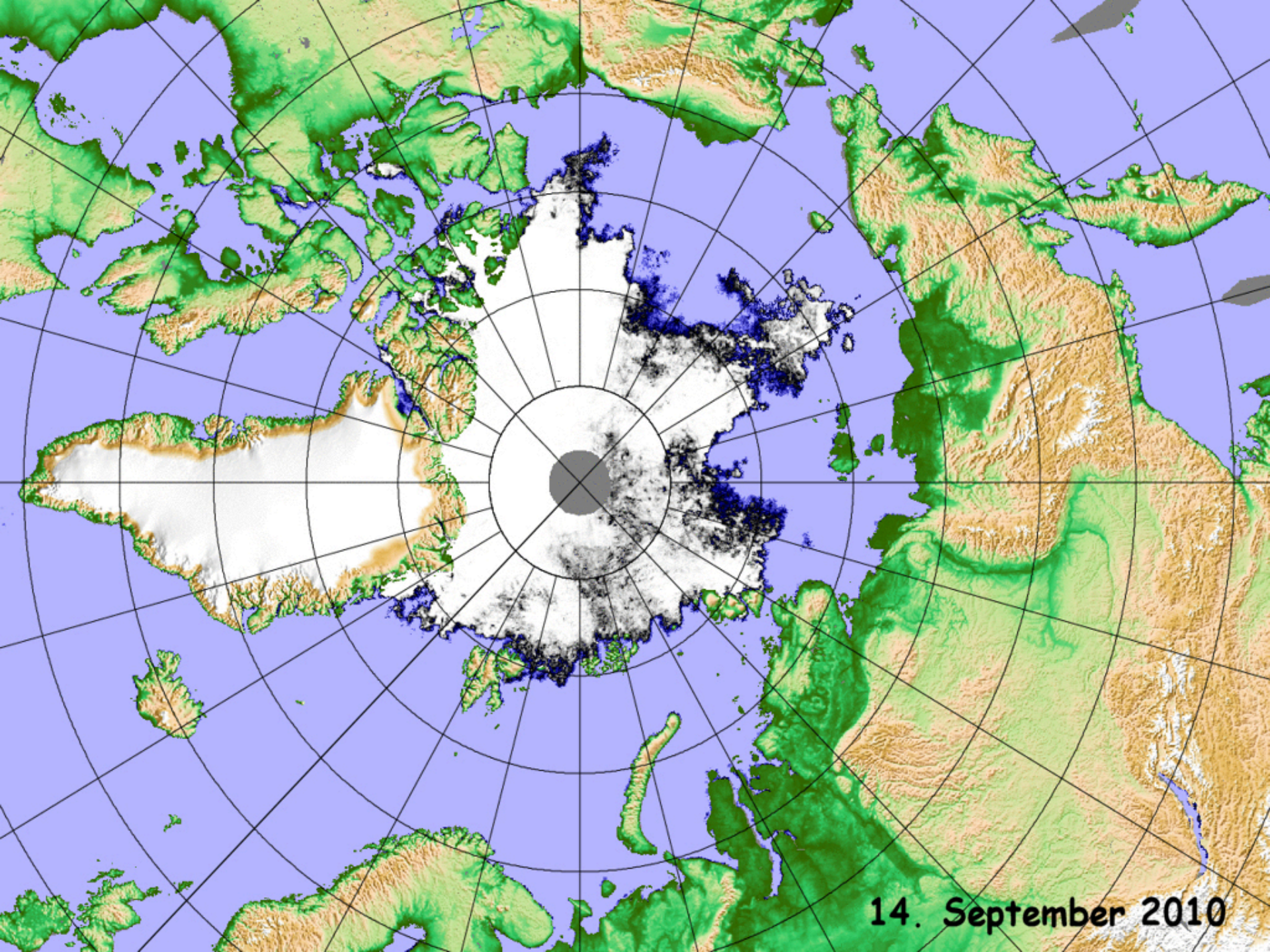
14. September 2007



14. September 2008



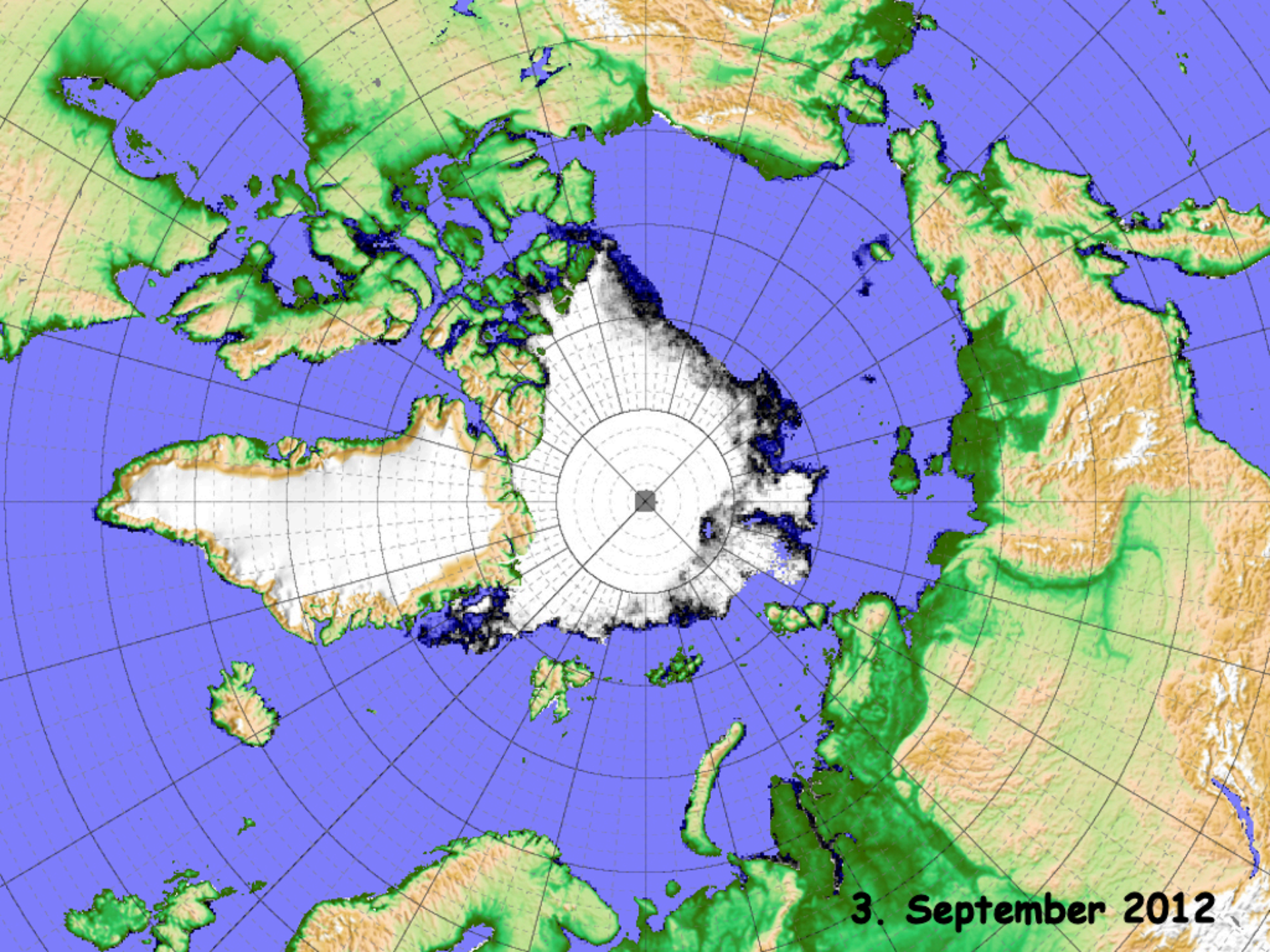
14. September 2009



14. September 2010

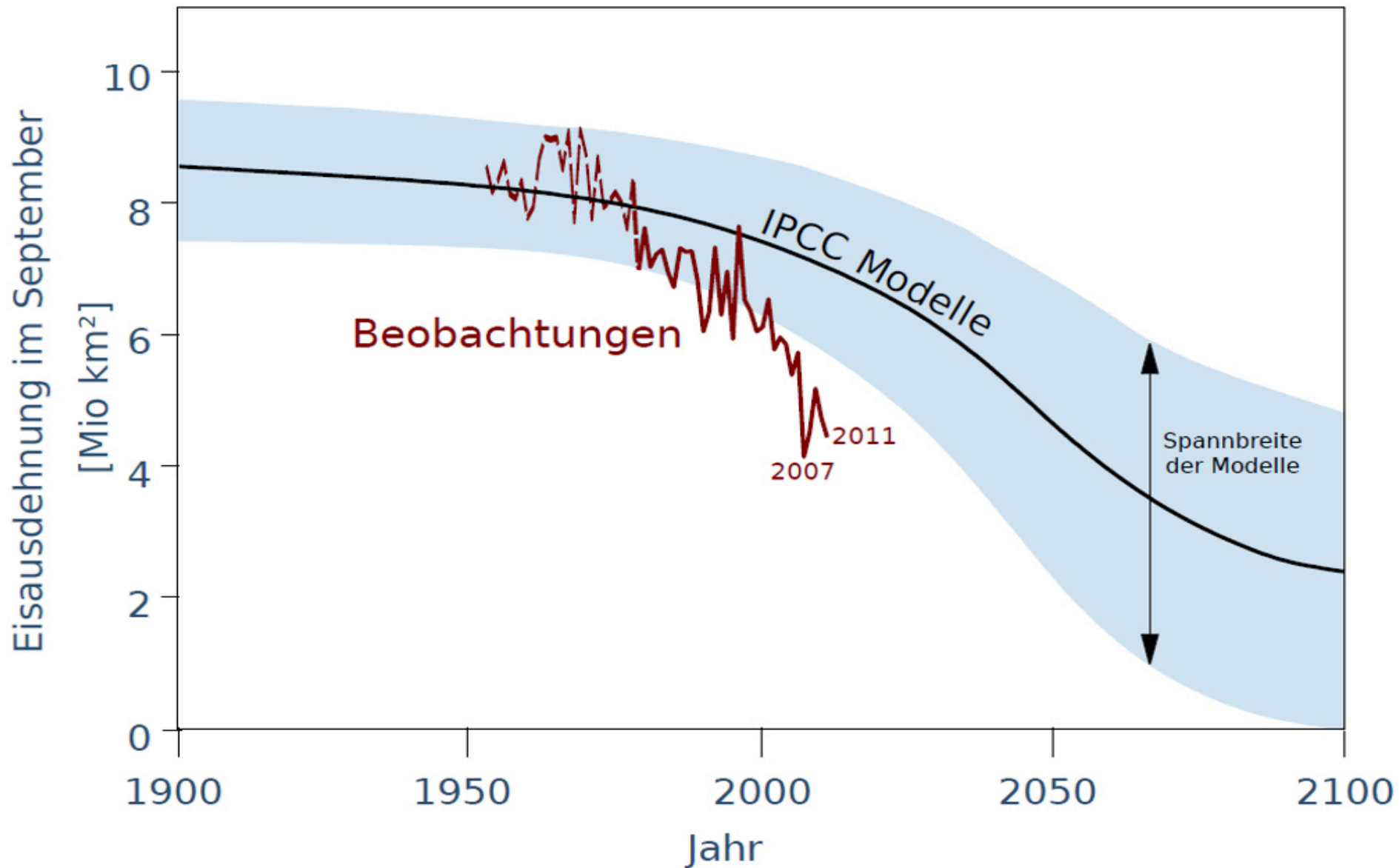


14. September 2011



3. September 2012

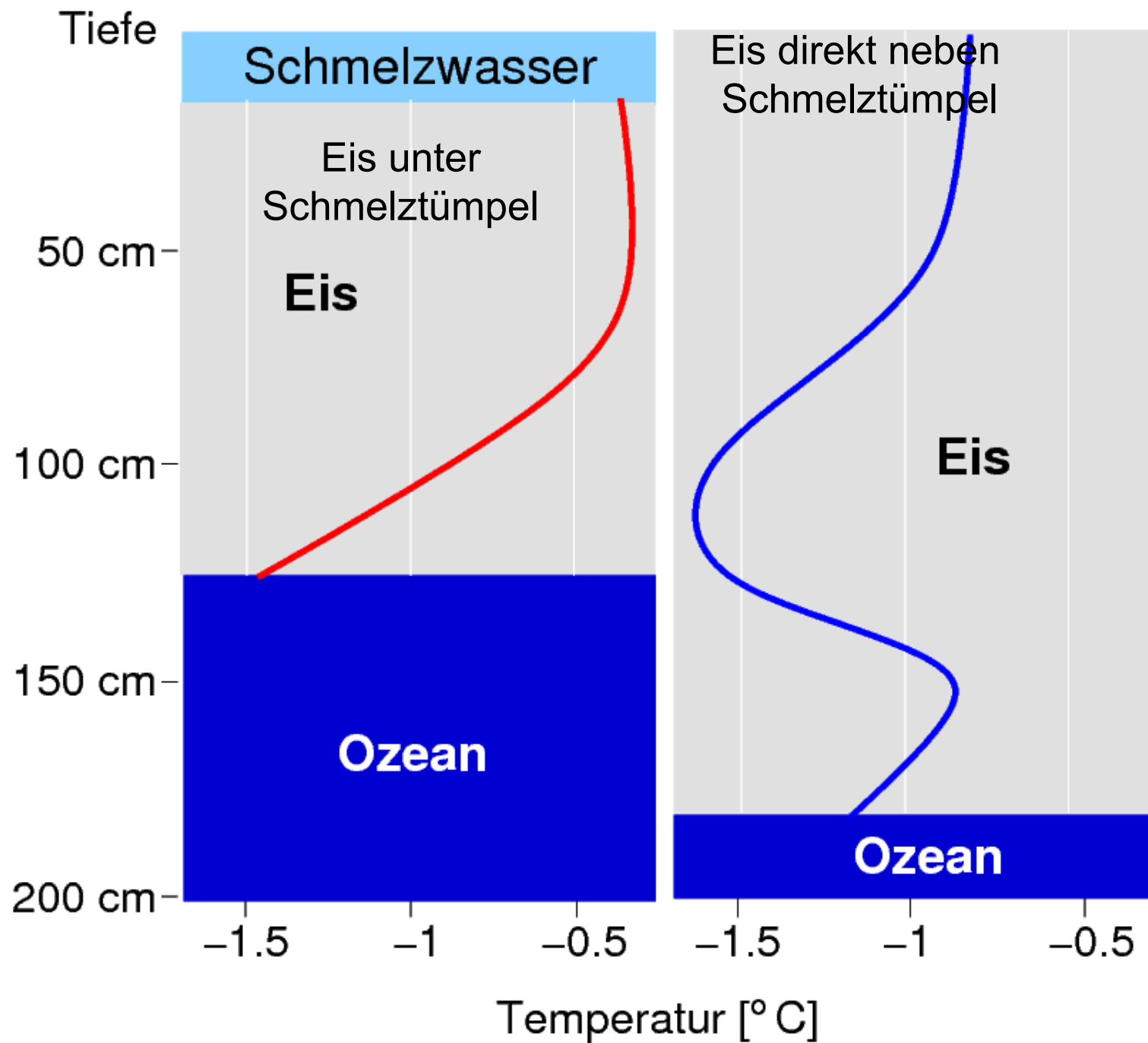
Modelle und Realität

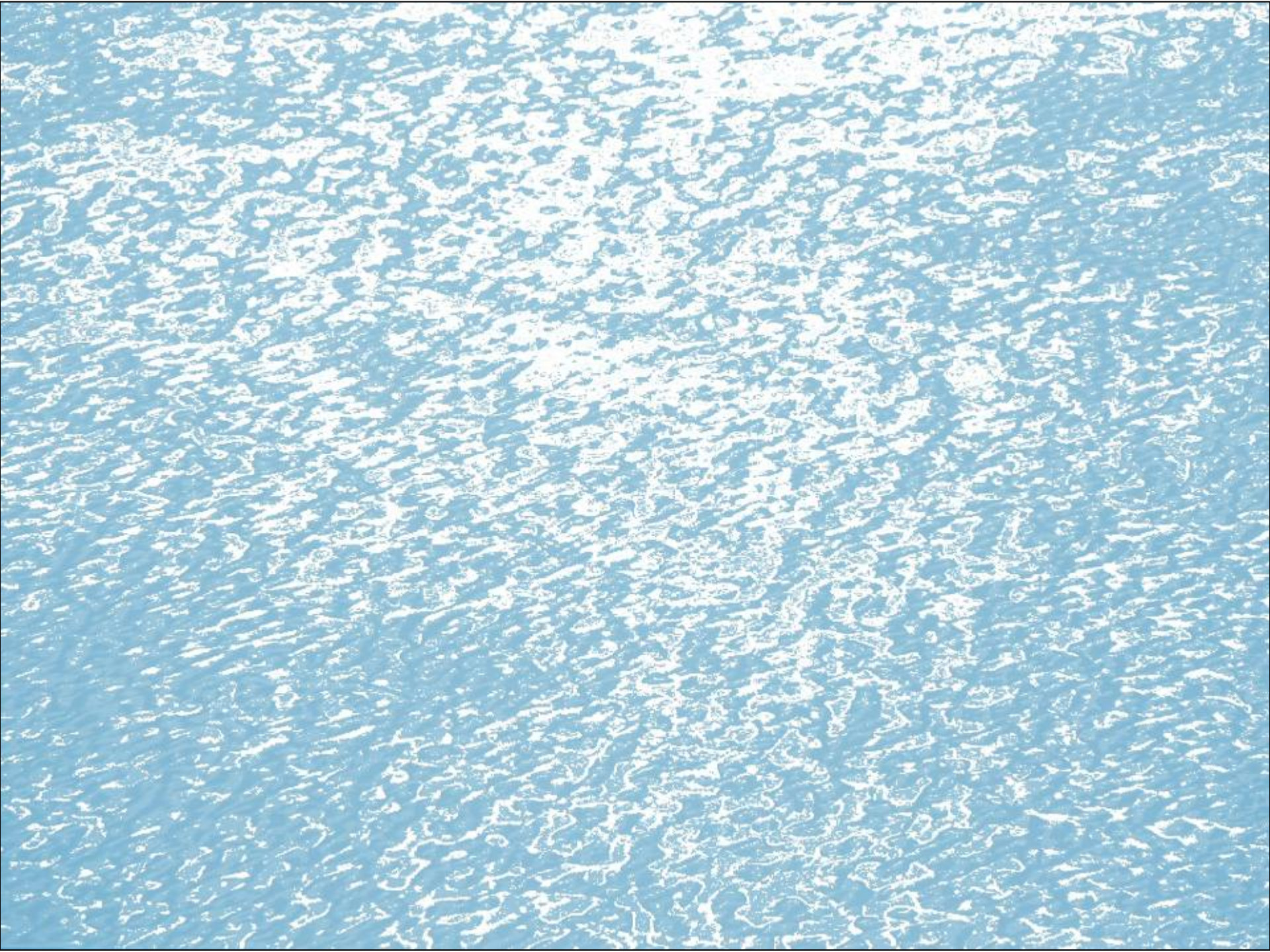




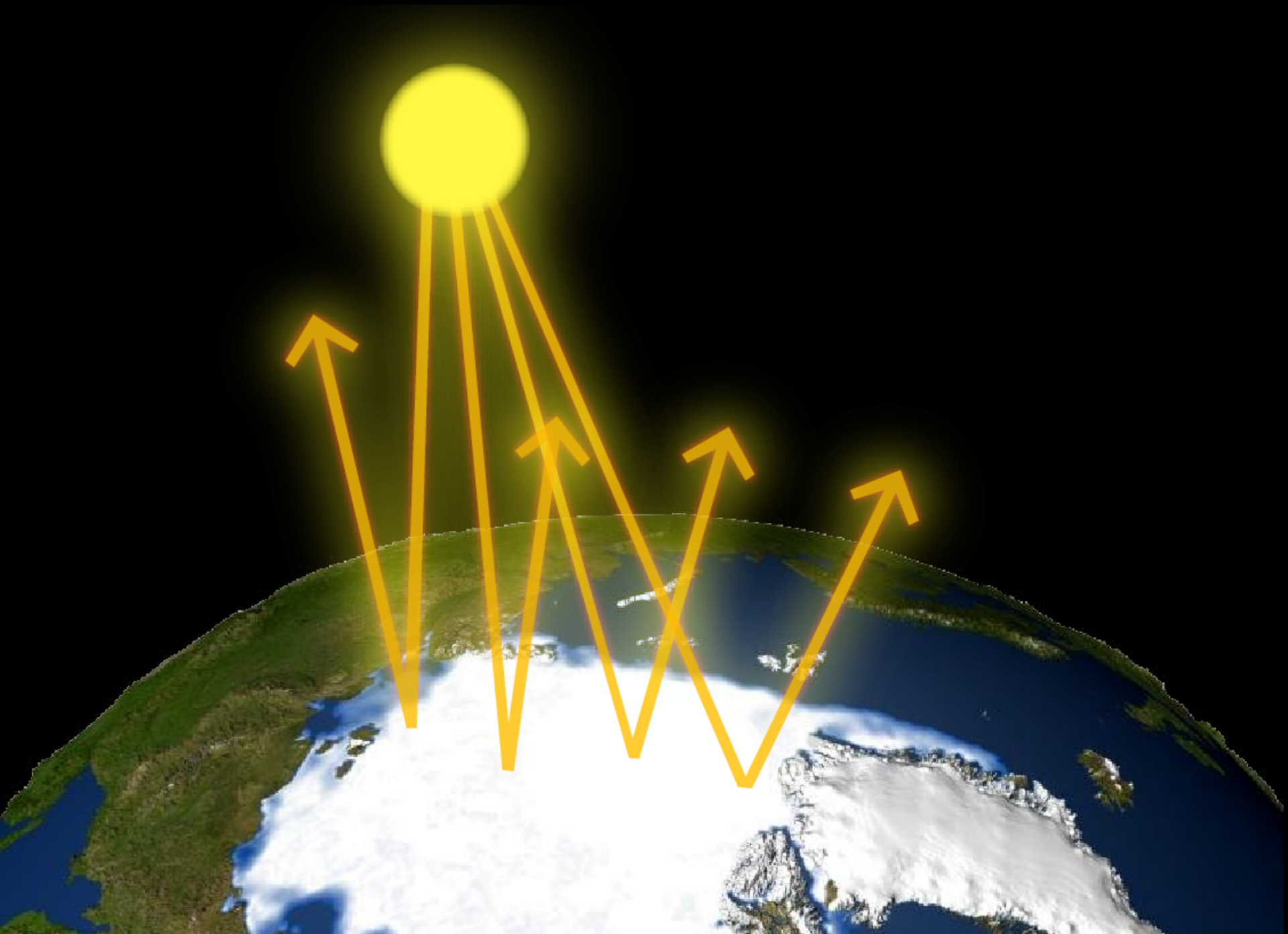


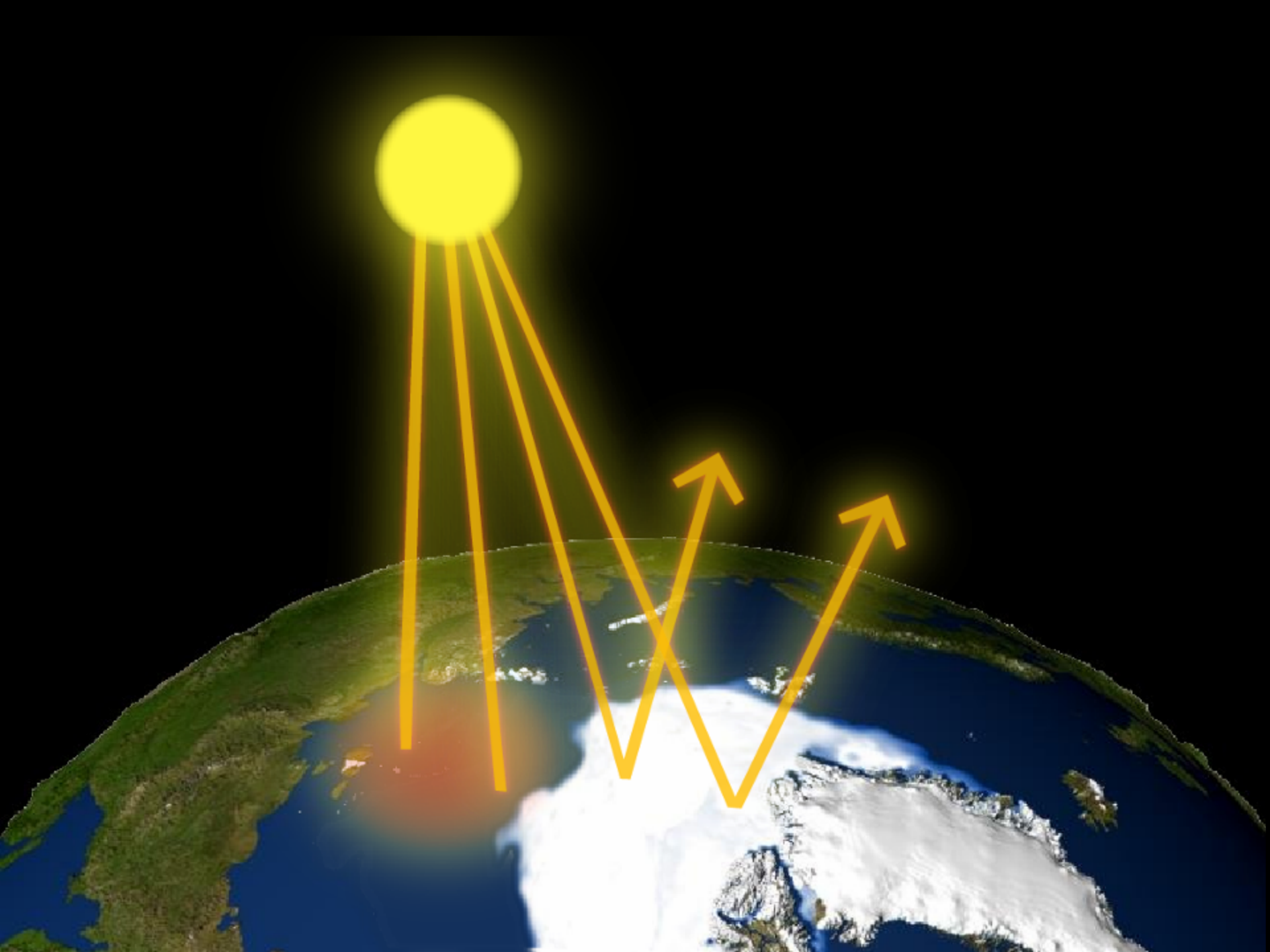


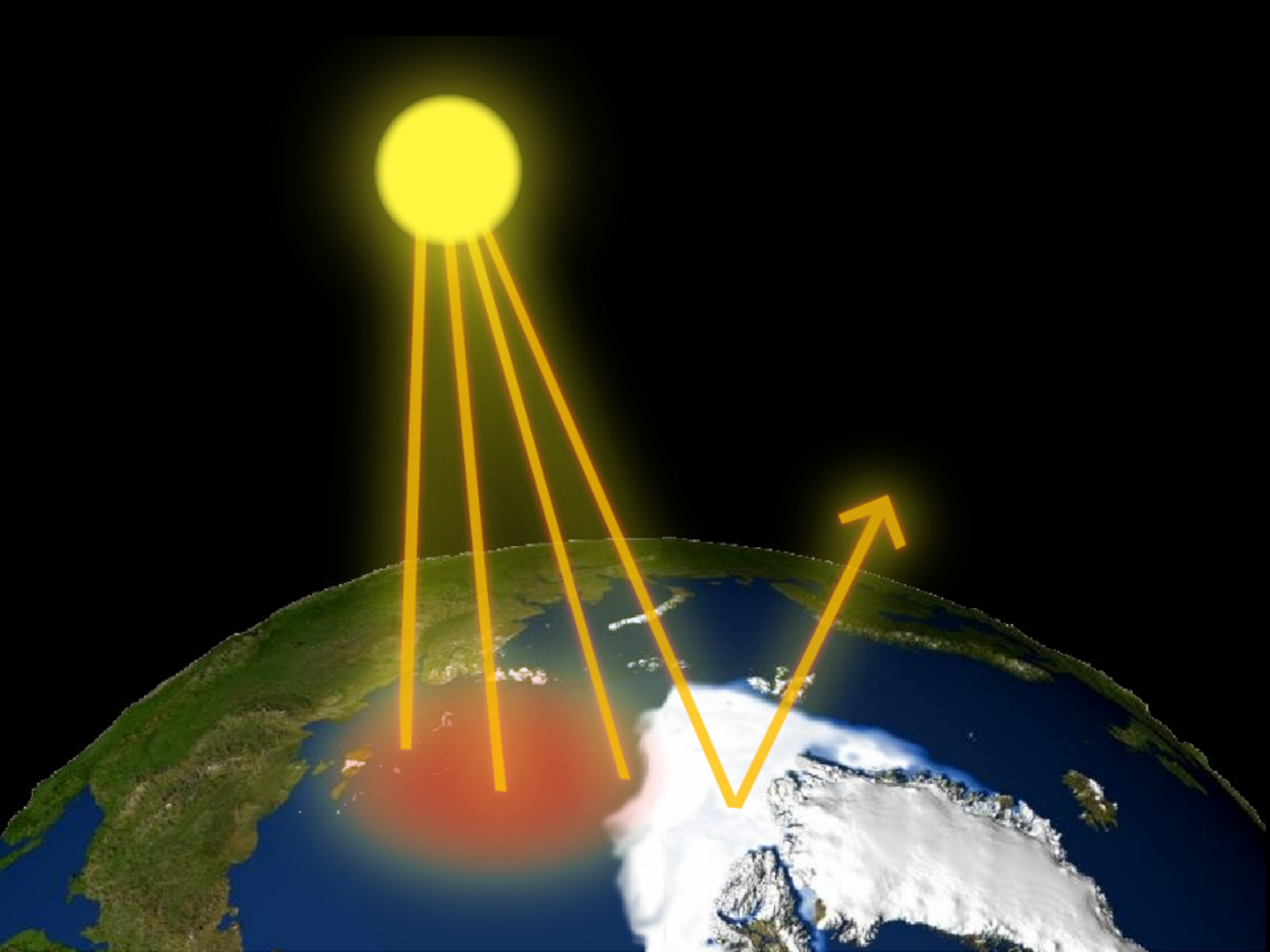


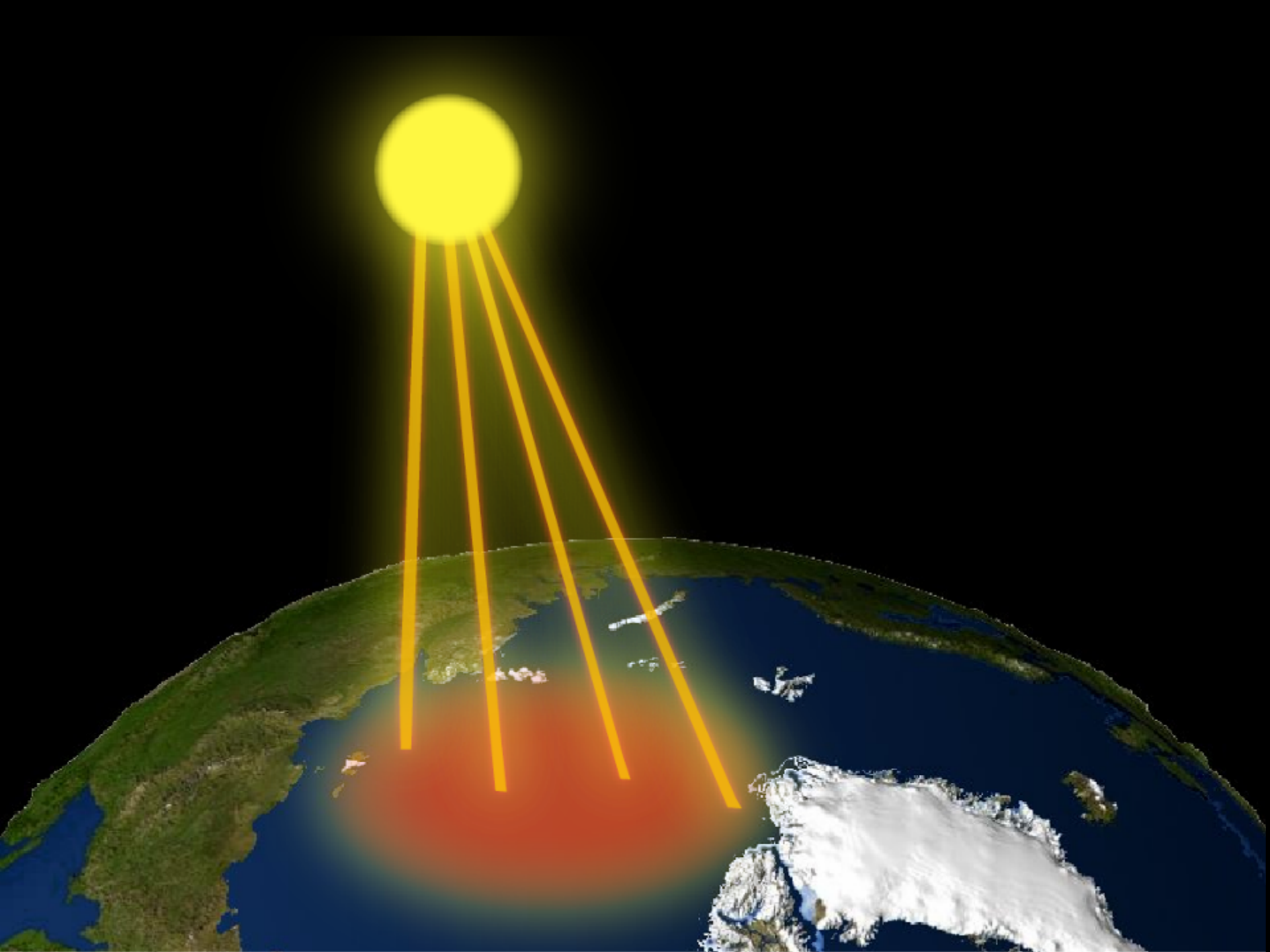












Sommer 20xx?





Potential flooding of Northwest Europe under rising sea level. A rise of 5 metres would flood significant parts of the North German Plain.

Areas flooded by a sea level rise of

- 5 metres
- 10 metres
- 30 metres
- 50 metres
- 70 metres
- Settlement

25 km













ALASKA
(USA)

KANADA

GRÖN-
LAND

NORWEGEN

von Russland
eingeforderter
Nutzungsbereich

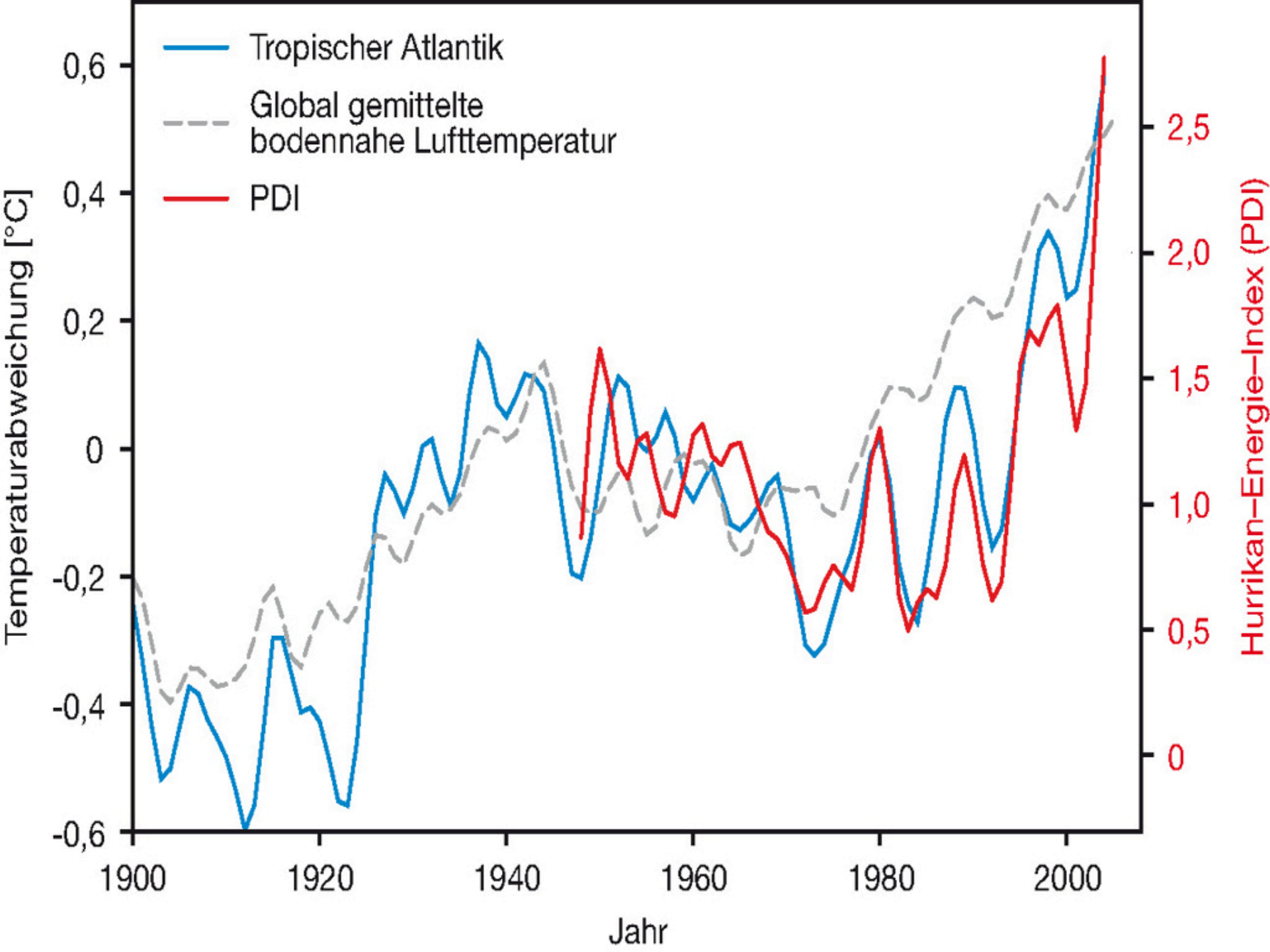
RÜSSLAND
Ausschließliche
Wirtschaftszone

- Rohstoffe:**
- Erdöl
 - Erdgas
 - Zinn
 - Mangan
 - Gold
 - Nickel
 - Blei
 - Platin
 - Rohdiamanten

vermutetes
Vorkommen

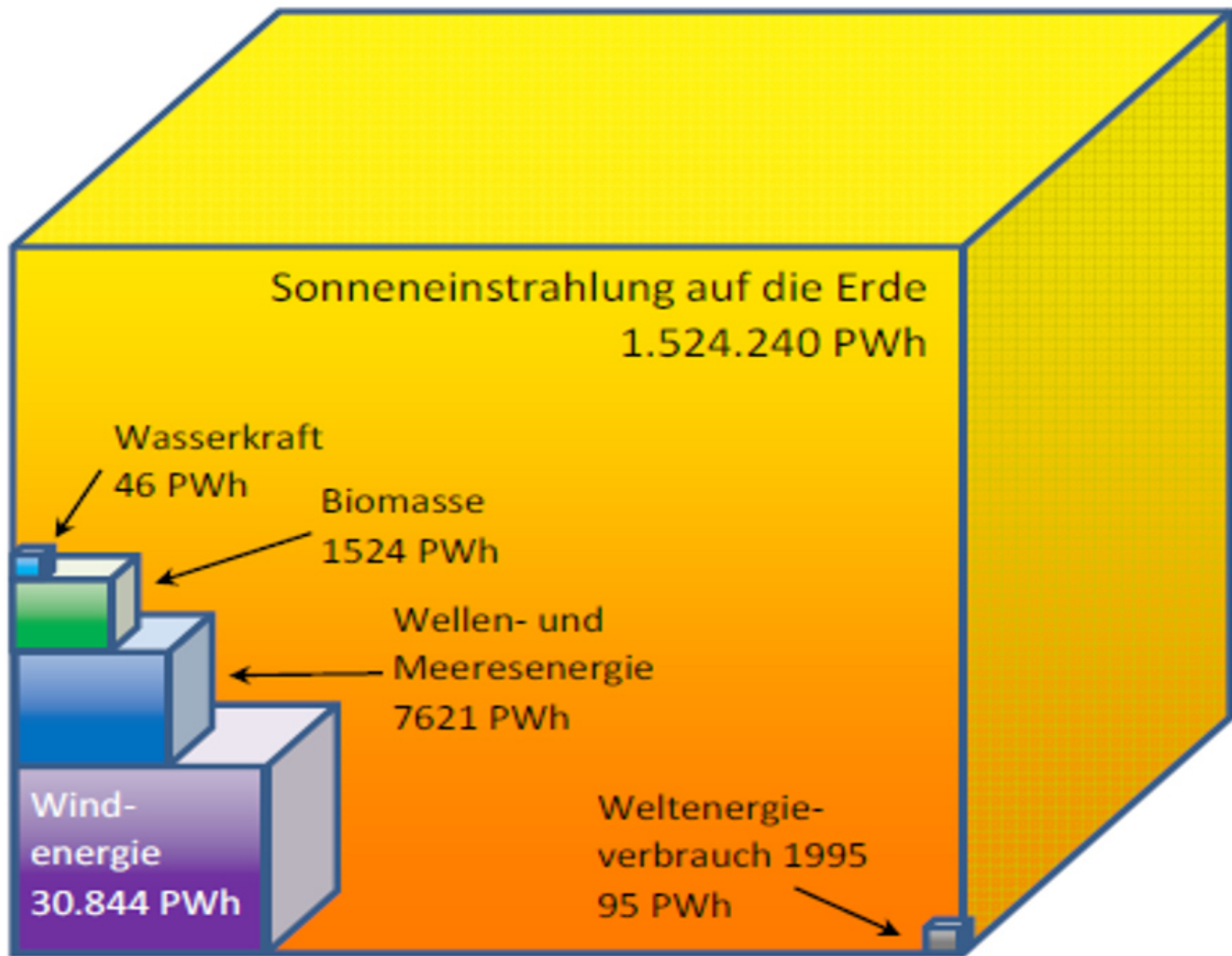
von den Staaten
beanspruchte Gebiete
haben international
keine Legitimation











Potenziale der erneuerbaren Energieversorgung





